

studioMAIN presents







presents:



📍 Little Rock, Arkansas

🌐 [www.studio-main.org](http://www.studio-main.org)

✉ [info@studio-main.org](mailto:info@studio-main.org)

## Organizer

Ernest Banks, Assoc. AIA

## Team



Ernest Banks, Assoc. AIA



Amber Banks, AIA



Nikki Crane, Assoc. AIA



Chris East, AIA

## Goals

Education Outreach  
Design Mentorship  
Scholarship  
Retention

## Mission

Reinvest in Students Everywhere (RISE) was started to address the lack of investment in underrepresented youth that want to be apart of the architecture and building construction industry. Our goal is to make a difference in the ongoing future of architecture and design by introducing young, willing, and able students to opportunities they may not have known were available to them. We believe that by investing time, resources, and funds into aspiring young designers from under-served areas that we can start to improve the health of the built environment by making it more inclusive.

# Case Study: Race/Ethnicity Enrollment Data

In collaboration with the Fay Jones School of Architecture + Design we have conducted a demographics study of enrollment into the first year design studio. This data highlights a glaring issue regarding representation within our architectural education community which translates into our professional community as well. The coordinators of RISE asked ourselves "How can we start to make a positive and lasting change for our community?"

We decided that by reaching out to under represented students, in high school, we could start to invest in their interest in design and reinforce the fact that the architecture and building construction industry is a viable path for everyone. The last part of this study will include a geographical look at which schools in Arkansas has a population of students in need and that are interested in design. These will be our primary zones for recruitment.

## FIRST YEAR STUDIO STUDY

This data was provided by the University of Arkansas - Fay Jones School of Architecture. Each figure focuses on a first year studio class and its enrollment based on race. As you read the data you can see that the numbers regarding race are improving, but the values are still concerning when it comes to representation.

The RISE program can not only affect change through numbers of representation, but, more importantly we can improve retention through continued support and mentorship of underrepresented students. It's our goal to ensure that the small population of diverse students thrive and succeed. Boosting numbers won't amount to much if the students don't have the mentorship available to help them through a rigorous program where the faculty and others do not look like or relate to them.

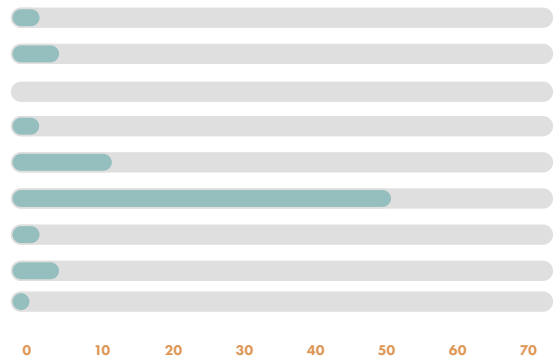
Data brought to you by:



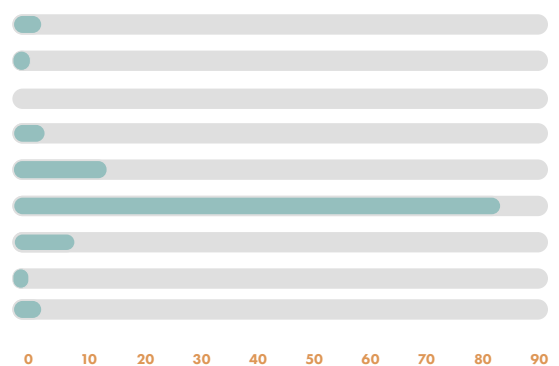
RACE/ETHNICITY	no. of students
AMERICAN INDIAN OR ALASKA NATIVE	0
ASIAN	5
NATIVE HAWAIIAN OR PACIFIC ISLANDER	0
BLACK OR AFRICAN AMERICAN	2
HISPANIC/LATINX	13
WHITE	62
TWO OR MORE RACES	2
NONRESIDENT/INTERNATIONAL	5
RACE/ETHNICITY UNKNOWN	1
TOTAL:	92

RACE/ETHNICITY	no. of students
AMERICAN INDIAN OR ALASKA NATIVE	2
ASIAN	1
NATIVE HAWAIIAN OR PACIFIC ISLANDER	0
BLACK OR AFRICAN AMERICAN	3
HISPANIC/LATINX	12
WHITE	82
TWO OR MORE RACES	8
NONRESIDENT/INTERNATIONAL	1
RACE/ETHNICITY UNKNOWN	2
TOTAL:	111

## FIRST YEAR STUDIO 2018



## FIRST YEAR STUDIO 2019



?

Did you know

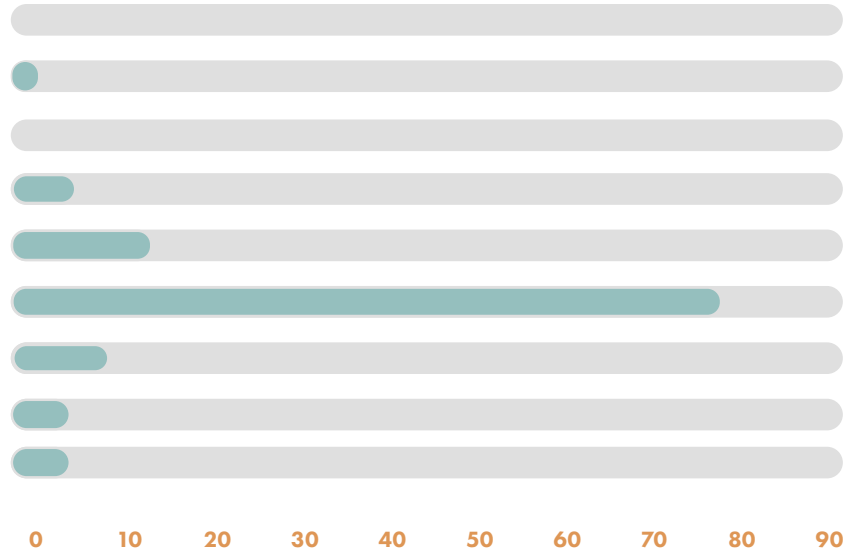
Race/Ethnicity	Yes	No	Unsure
White	65%	26%	9%
Black or African Amer.	20%	66%	5%
Hispanic or Latino	44%	48%	8%
Asian	41%	47%	12%
Other	48%	44%	8%

When asked if they could identify people in leadership at their firm who are similar to themselves, two-thirds of African American respondents indicated they could not—40 percentage points higher than white respondents.

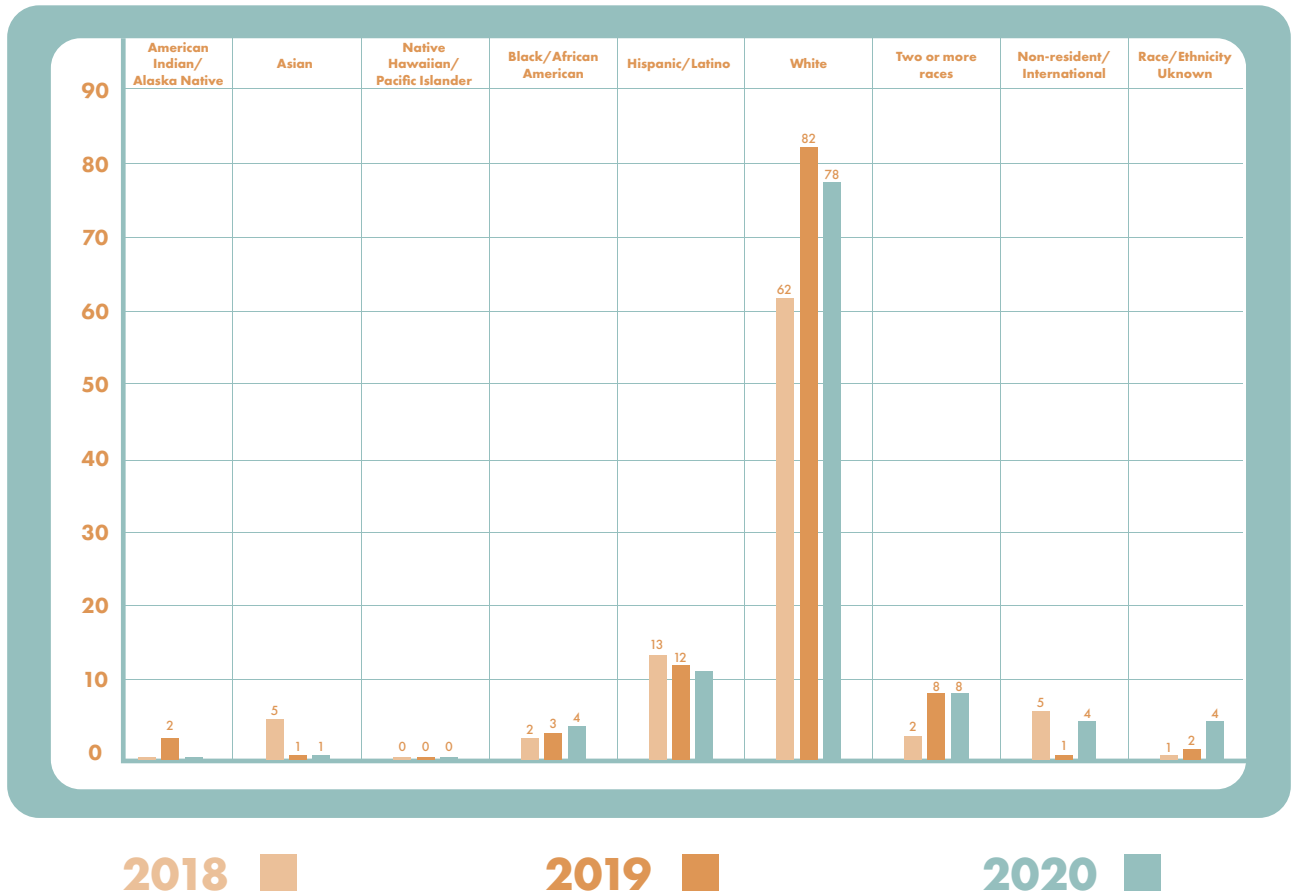
Cited from: NCARB  
<https://www.ncarb.org/nbin2020/ncarb-and-noma>

RACE/ETHNICITY	no. of students
AMERICAN INDIAN OR ALASKA NATIVE	0
ASIAN	1
NATIVE HAWAIIAN OR PACIFIC ISLANDER	0
BLACK OR AFRICAN AMERICAN	4
HISPANIC/LATINX	11
WHITE	78
TWO OR MORE RACES	8
NONRESIDENT/INTERNATIONAL	4
RACE/ETHNICITY UNKNOWN	4
<b>TOTAL:</b>	<b>110</b>

### FIRST YEAR STUDIO 2020



### FIRST YEAR STUDIO 2018 - 2020



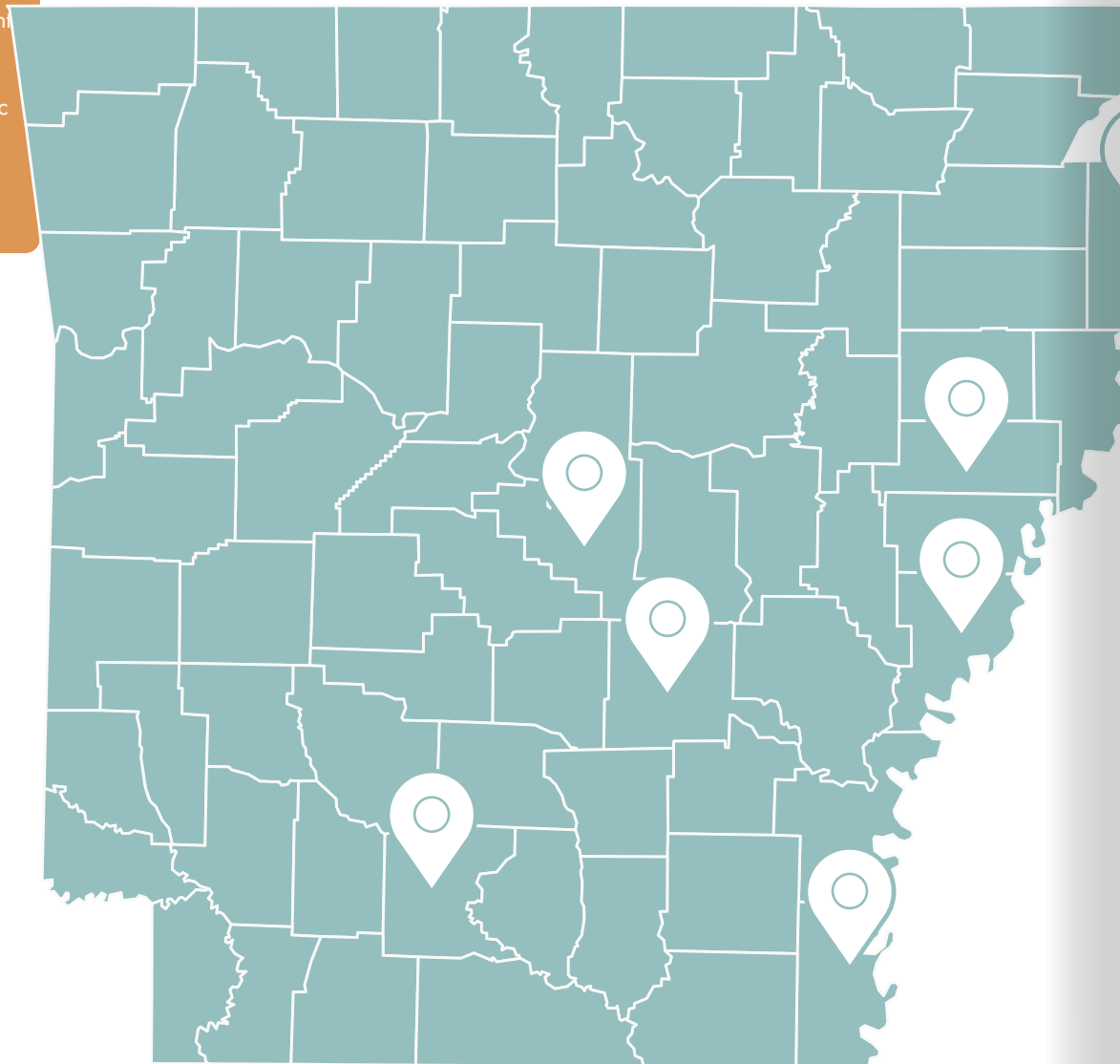
# Geographic Survey

We will scout areas in Arkansas where potential students are in need of financial resources or locations where the idea of being an architect is not on their radar.

Through a survey (sample on next page) we will collect data that will assist us with identifying the schools that would benefit the most from our program. We will reach out to superintendents/counselors and the appropriate contacts to get surveys to school districts.



We searched through which counties in Arkansas have the highest Black and Hispanic student populations within the state to determine our target demographic locations.



# Survey Questions

- Do you know what an Architect is?
- Have you designed anything before?
- Can you think three-dimensionally?

On a scale of \_\_\_\_ do any of these characteristics describe you?

	1. Strongly Agree	2. Somewhat Agree	3. Neither Agree Nor Disagree	4. Somewhat Disagree	5. Strongly Disagree
I like to solve problems and figure things out. I love to learn and experiment.	<input type="radio"/>	<input type="radio"/>	<input type="radio"/>	<input type="radio"/>	<input type="radio"/>
I don't give up easily. I keep trying	<input type="radio"/>	<input type="radio"/>	<input type="radio"/>	<input type="radio"/>	<input type="radio"/>
If I'm interested in learning or doing something, I'll make my own plans to make it happen.	<input type="radio"/>	<input type="radio"/>	<input type="radio"/>	<input type="radio"/>	<input type="radio"/>
If someone tells me to make changes to something I see it as a new challenge and not a problem.	<input type="radio"/>	<input type="radio"/>	<input type="radio"/>	<input type="radio"/>	<input type="radio"/>
Are you good at collaborating with others? Are you the one who helps lead a group or team to success?	<input type="radio"/>	<input type="radio"/>	<input type="radio"/>	<input type="radio"/>	<input type="radio"/>
I like to daydream, build models, create art, or make music, but I can also make an action plan and stick to it to finish a project I've started	<input type="radio"/>	<input type="radio"/>	<input type="radio"/>	<input type="radio"/>	<input type="radio"/>

# Program

We will scout potential students by identifying areas in Arkansas where people are in need. Through an orientation we will identify students that are the most engaged and invite them to join a short structured design program. The program will involve a short design project activities that challenge the students with work similar to what they'll see in their first year.

## Orientation

Through an orientation we will identify students that are the most engaged and invite them to join a short structured design program that will act as their scholarship application. The program will involve a short design project activities that challenge the students with work similar to what they'll see in their first year. We will conclude with a design review so that we can evaluate their overall aptitude and award students.

1





## Scholarship Award

We will award students based on an evaluation of their participation in the program, their financial need, and their overall aptitude. Based on the amount of awards, each student will receive funds that will pay for a new laptop and a materials stipend for their first year.

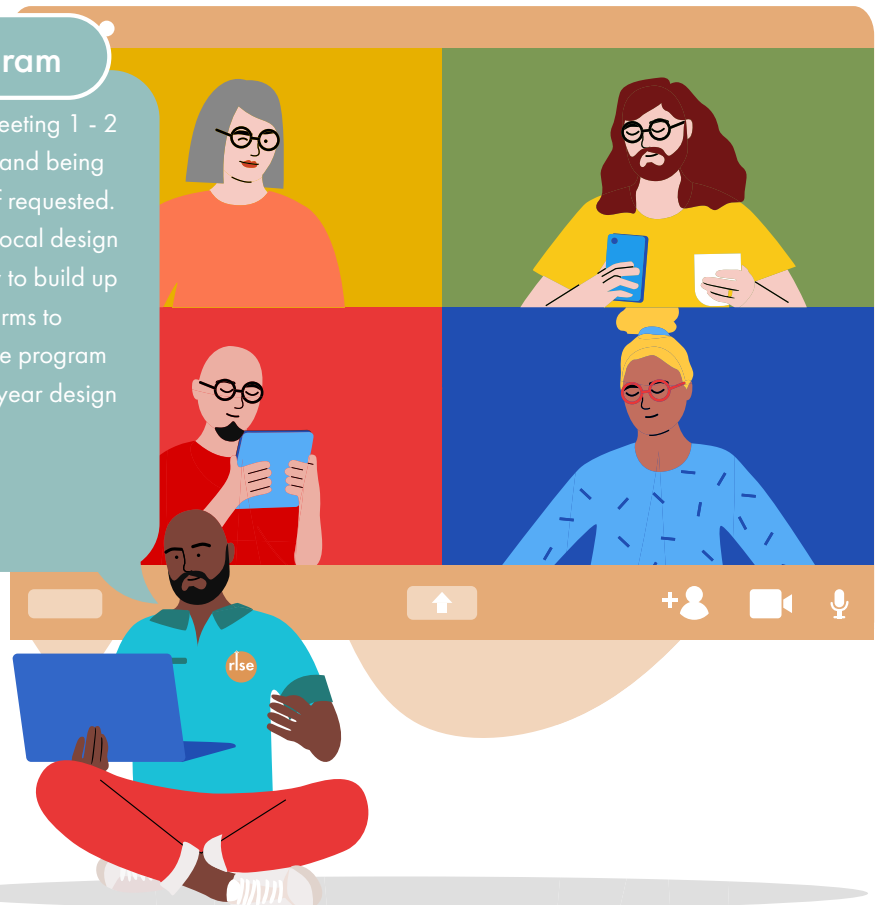
2



## Mentorship Program

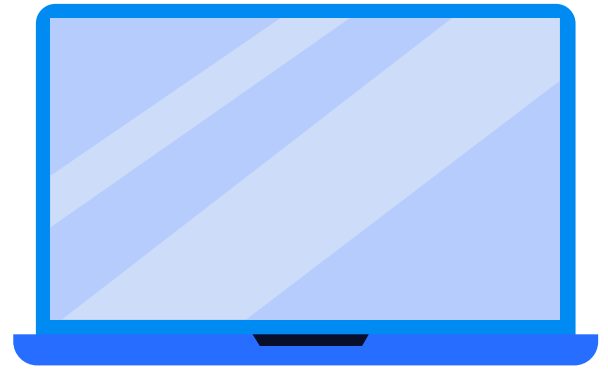
Our mentorship will consist of meeting 1 - 2 times a month, giving pep talks, and being available to critique their work if requested. We will also provide them with local design opportunities at their availability to build up their portfolio and visit to local firms to improve their design thinking. The program will end by evaluating their first year design performance.

3



# Cost

On average, architecture students spend around \$500 or more per semester on materials. The cost for this scholarship program is based on the materials budget estimate and the price of the recommended laptop by the Architecture school. By funding these items for students we can alleviate some of the financial stress that comes with entering design school.



(Based on items recommended by the University of Arkansas )

Tuition Assistance (Course Fees, Course Field Trips, and other associated expenses) — **\$2,750.00**

Architecture Studio Tools Kit — **\$250.00** plus tax

Architecture Studio Materials Stipend (for two semesters) — **\$1,000.00**

Total — Including tax **\$4,000** per student/scholarship

ITEM	COST
Tuition Expenses	2750
Supply Kit	250
Materials Stipend	1000

A stylized illustration of a calculator with a light green border and a white face. The buttons are arranged in a standard grid, including a numeric keypad, a decimal point, an equals sign, and basic arithmetic operators. The calculator is positioned below the table.

on	c	m+	/
7	8	9	x
4	5	6	-
1	2	3	+
0	.	=	



# Donate

Please consider donating to support our goal of funding 5 scholarship awards, \$4,000 each, for young designers of color! All funds will go towards purchasing the previously listed items, and any additional funds will go towards scholarships for next year and providing opportunities via our mentoring component such as design trips, speaker engagements, and sponsored internships.

With your support we can make an impact on the Arkansas design community and beyond. Help us make architecture and design more accessible, inclusive, and impactful



*Scan. Pay. Go.*

Scan the QR Code to donate to our mission.

Thank you!

